

Thayer House

*Senior Housing with Services at Thayer Commons
North Avenue, Burlington*



About the Thayer House

Cathedral Square began construction on its newest community, Thayer House, in May 2011. Thirty three apartments will be available in the Spring of 2012. Located next to Leddy Park and beach, and adjacent to the stores and amenities of the Ethan Allen shopping center, Thayer House offers residents an attractive and convenient location in Burlington's New North End neighborhood.

With on site staff, beautiful common gathering areas and underground parking, Thayer House has been designed to meet the housing needs of the New North End neighborhood.

All Thayer House residents will be eligible to participate in our new program; Support and Services at Home (SASH): a care partnership between Cathedral Square, the VNA of Chittenden and Grand Isle Counties, Champlain Valley Agency on Aging, and the PACE program. The care partnership brings care management and preventive services right to the home of the participants at non-profit senior housing and at homes in the surrounding neighborhoods.

During initial occupancy, preference will be given to eligible applicants who are residents of Burlington and do not currently live in affordable housing.

All apartments are fully accessible or adaptable to meet the changing needs of seniors. Like all Cathedral Square communities, Thayer House offers 24-hour emergency staffing, laundry facilities, on-site support services, and maintenance staff.

Please contact us at 802-863-2224 for more information. To view all Cathedral Square communities, please visit our website at www.cathedralsquare.org.

Features:

- 30 one and 3 two-bedroom apartments
- All utilities included in rent (except telephone, cable television and internet service)
- Located in Burlington's New North End neighborhood
- Adjacent to shopping, restaurants and services
- Easy access to the CCTA bus line
- Secure entryway system
- Spacious community rooms
- Laundry facilities on each floor
- Close to the Burlington bike path, Leddy Park and Beach
- Pets welcome

Amenities:

- Underground and on-site parking
- Central air conditioning
- Social, cultural and recreational activities
- Elevator
- Wellness nursing on-site
- Smoke-free housing
- Support and Services at Home (SASH) program

Eligibility:

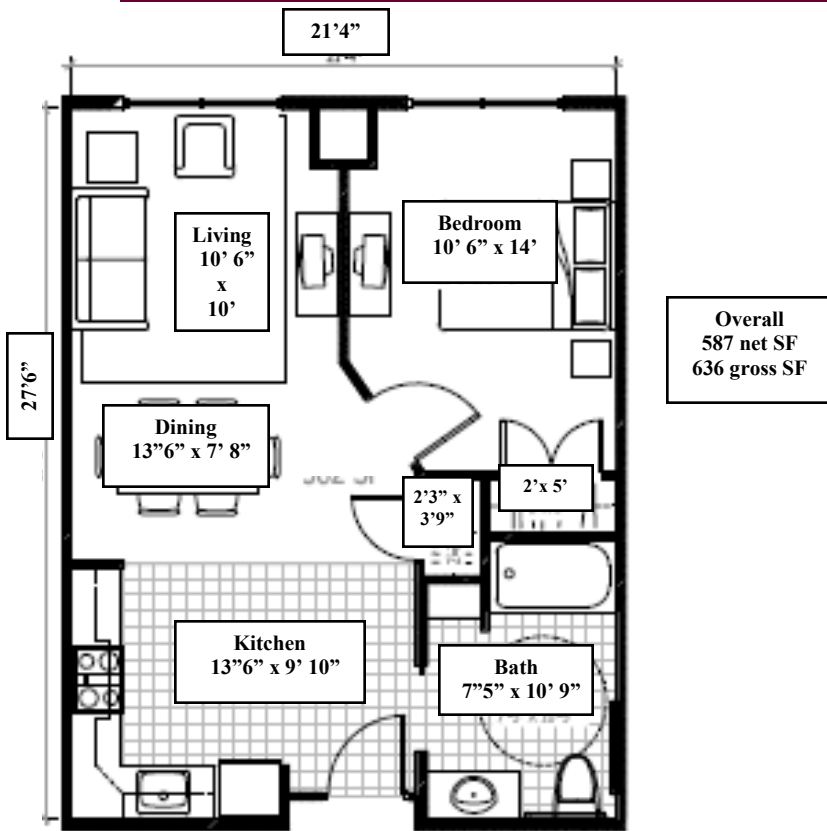
Rents will range from \$850 to \$1,050 a month.

Contact Information:

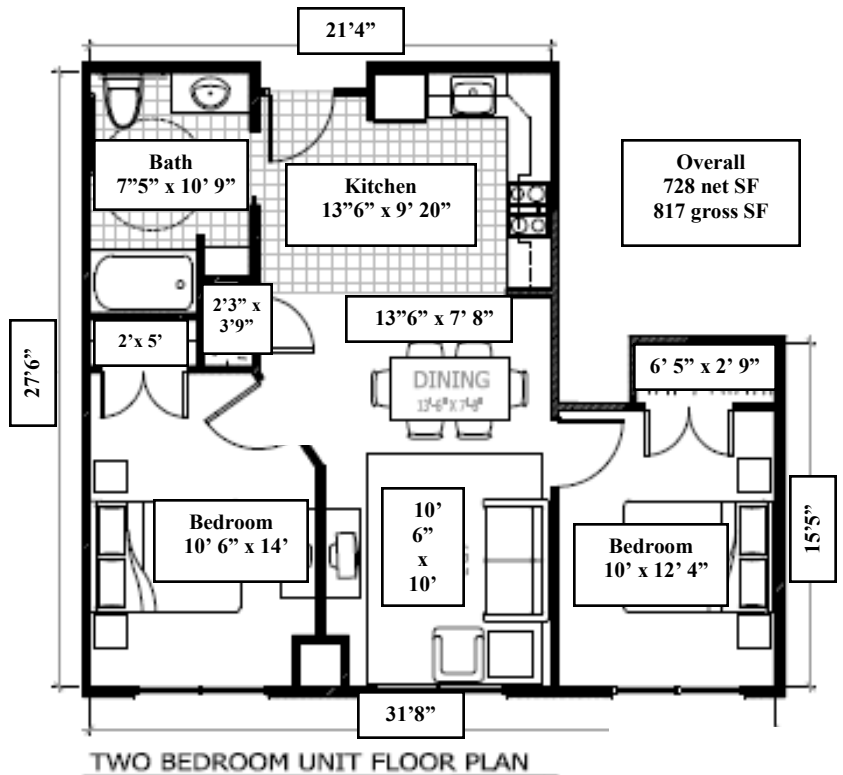
Cathedral Square
412 Farrell Street, Suite 100
South Burlington, VT 05403
Phone: 802-863-2224
Fax: 802-863-6661
E-mail: info@cathedralsquare.org
Website: www.cathedralsquare.org



Thayer House Sample Apartments



ONE BEDROOM UNIT FLOOR PLAN



TWO BEDROOM UNIT FLOOR PLAN

How to Get There

From I-89 take exit 14W, and follow signs for downtown Burlington, continuing on Main Street towards the Lake. Turn right onto Battery Street, take a left at the second light onto North Avenue. Continue down North Avenue, past the high school and the Ethan Allen shopping center. Thayer House will be on your left just past the Ethan Allen shopping center.