



# Cathedral Square

*Advancing Healthy Homes, Caring Communities & Positive Aging since 1977*

2022  
ANNUAL  
REPORT



*Celebrating Our Staff and  
Strengthening Memory Care*



## CATHEDRAL SQUARE BOARD OF DIRECTORS

Effective January 2023

MOHAMED BASHA, R.N.  
*President*  
Founder & CEO, TLC Nursing & HomeCare

STEPHANIE TAYLOR  
*Vice President*  
Principal R.E.M. Development/Partner  
in the Miller Realty Group

CHOL DHOOR  
Executive Director, Sudanese Foundation of Vermont

AARON FERENC  
Deputy Commissioner,  
Vermont Department of Financial Regulation

SHAUN GILPIN  
Housing Policy Specialist,  
Vermont Department of Housing  
& Community Development

JENNIFER GREEN  
Director of Sustainability & Workforce  
Vitality, Burlington Electric Department

CRAIG JONES, M.D.  
Chief Medical Officer, Pravis Health

MARK LEVINE, M.D.  
Vermont Commissioner of Health

CAROL MORAN-BROWN  
Retired Assistant Vice President  
of Student Services, Champlain College

SARAH MUYSKENS  
Community Volunteer & Retired Consultant

CARROLL "BUD" OCKERT  
Retired Colonel, U.S. Army

TIM SAMPSON  
Director, Downs Rachlin Martin

NANCY SNYDER  
Cathedral Square Resident & Retired Realtor

THE REV. GRETA GETLEIN  
*Ex Officio*  
Dean & Rector, Cathedral Church of St. Paul

With heartfelt thanks to departing  
Board members **Erik Hoekstra**,  
**Polly Nichol** and **Amy Putnam**,  
whose terms ended Dec. 31, 2022.

### Dear Friends,

If the COVID pandemic has begun to subside, its effects on the nation's workforce certainly linger on. Everywhere you turn, businesses are struggling to find workers. Cathedral Square is no exception.

Fortunately, we've had the support of friends, donors, board members — and most especially, our already hard-working staff — who continually step up to help whenever there is a need.

Long after they've finished their duties for the day or retired for the weekend, they volunteer in our assisted-living kitchens, perform routine maintenance, clean and sanitize common areas, pinch-hit for our resident assistants, and perform acts of kindness large and small.

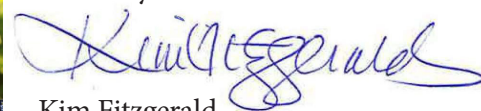
I am inspired daily by their care and support and their do-unto-others generosity. We are pleased to share some of their stories in this report.

Workforce challenges notwithstanding, 2022 was a year of major accomplishments, as always made possible by strong partnerships with organizations large and small:

- Our newest housing community, Bayview Crossing, opened in South Hero, marking our first foray in Grand Isle County. It was a joy working with local nonprofit CIDER (Champlain Islanders Developing Essential Resources) to realize this dream, which includes 30 apartments and a new office for CIDER.
- We completed major renovations at Whitney Hill Homestead and celebrated the vibrant "new" community with residents and others in the fall.
- We laid the groundwork for a second housing community in Hinesburg.
- SASH® (Support and Services at Home) expanded on several fronts thanks to a funding boost, a new partnership with BlueCross BlueShield of Vermont, a grant to build out the new and promising "SASH for All" pilot, and funding from the state of Rhode Island to bring SASH to more locations there.
- With funding from HUD, we began making free home repairs and accessibility modifications in rural Chittenden County communities for low-income older adult homeowners so they could remain living at home.
- Last but certainly not least, we launched Cathedral Square's first capital campaign. We have been humbled by the outpouring of support and have nearly met our goal, which will allow us to pay off the debt at Memory Care at Allen Brook and continue operations there.

It has been another year for the record books — and another year of immense gratitude for your steadfast support.

Sincerely,



Kim Fitzgerald  
CEO



Residents Maria Charbonneau (left) and Theresa Hinman (right) are all smiles after receiving homemade chili and handmade shawls from Cathedral Square staff accountant Rose Cheeseman.

## Pitching In and Spreading Joy Along the Way

One of the many staff members who helped us weather the workforce shortage in 2022 is accountant Rose Cheeseman, who's been with Cathedral Square for more than five years.

She first offered to help with custodial work and then moved into preparing meals in assisted living. These days when she's not crunching numbers or helping her colleagues, you can find her crocheting shawls and lap blankets or making soup or chili by the gallons,

which she divvies up into canning jars for residents at Grand Way Commons in South Burlington.

"It started when we were all working from home," Rose says. "I had two extra hours a day because I wasn't commuting, so I thought I should use it to do something for our residents."

Rose says she loves her rapport with the people who live at Cathedral Square. "Older people really have a special place in my heart," she says.



"I get a lot of joy from doing things to brighten their day. To me," she continues, "people at this [older] stage of their life deserve to feel important and loved. Because they are."

Cathedral Square is a nonprofit, 501(c)3 organization and an equal-opportunity employer and housing provider. Since 1977, we have worked to create a better Vermont by providing affordable, service-enriched homes to older Vermonters and people with diverse needs. Our organization and our communities are welcoming and inclusive, embracing and supporting diversity in all its forms.





# The Campaign for Memory Care at Allen Brook

## \$1 Million Goal Boosted by Pledge to Match \$500,000 from the Families of Holly & Bob Miller and Lois & Mac McClure

With generous support from the families of Holly & Bob Miller and Lois & J. Warren (“Mac”) McClure, Cathedral Square launched a \$1 million capital campaign in 2022 to ensure the future of Memory Care at Allen Brook, its Williston-based residence for very low-income Vermonters on Medicaid.

The two families, known for their philanthropic support of worthy Vermont causes for decades, are matching every donation to the campaign dollar for dollar up to \$500,000.

Memory Care at Allen Brook is the only truly affordable memory-care residence in Vermont, as it accepts people on Medicaid and with Section 8 rental subsidy at the time of admission. Private residential care in Vermont for people with Alzheimer’s and other forms of dementia typically costs \$10,000 a month or more.

Cathedral Square created Allen Brook in late 2017 after raising \$1 million to help buy the former Vermont Respite House and transform it into the model memory-care community it is today.

In order to complete the purchase, Cathedral Square obtained a \$1 million loan that it had planned to pay off starting in 2020, but the pandemic interrupted that plan.

“Unfortunately, the extraordinary costs we have incurred due to the pandemic, combined with the skyrocketing cost of goods and services during this time of severe workforce shortages and record-breaking inflation, have increased our expenses to the point that we no longer can carry this debt *and* continue operating Memory Care at Allen Brook,” Cathedral Square CEO Kim Fitzgerald explained at the time. “We need to pay off the debt so we can apply those funds to our operating budget and keep Allen Brook open for the long term.”

Through a fund at the Vermont Community Foundation, the McClure family continues to support causes that Mac and Lois championed before Mr. McClure’s passing from complications of Alzheimer’s in 2004. Their daughter Barbara noted that Lois is grateful that the building that served as the original Respite House, which the McClure and Miller families worked together to help



Program coordinator Ellen Gagner hugs her friend and Allen Brook resident Rita Scott.

develop in the 1980s, will continue to serve Vermonters in a new way. “This matching gift in partnership with the Miller family feels ‘full-circle’ in many ways,” she said.

Miller family spokesperson and Cathedral Square board member Stephanie Miller Taylor knows firsthand

the emotional and financial havoc that dementia wreaks on families and understands the importance of securing the future of Allen Brook.

“My stepmother struggles with dementia, and I know what it takes to ensure that she is safe and has joy in her life,” she said. “It is vitally important that Allen Brook continue so that people who

otherwise might receive the worst of care can receive the very best.”

Memory Care at Allen Brook is known for its cozy, homelike atmosphere and its Best Friends™ approach to memory care. Staff and residents interact as friends, and residents have control over their day-to-day lives. It is one of Cathedral Square’s two assisted-living communities

in addition to 25 independent-living communities for older adults and people with diverse needs.

The campaign has just over \$85,000 to raise as of Dec. 31, 2022. To learn more and contribute, visit [cathedralsquare.org/memory-care-campaign](https://cathedralsquare.org/memory-care-campaign) or contact Kim Fitzgerald at [fitzgerald@cathedralsquare.org](mailto:fitzgerald@cathedralsquare.org) or 802-863-2224.



Among the gifts received and matched to date are \$100,000 each from the **Amy Tarrant Foundation** and the **Hoehl Family Foundation**; and gifts ranging from \$5,000 to \$50,000 from the **M&T Foundation**, **Nancy Wright and Steve Lidle, NFP Property & Casualty Services**, and the **Fountain Fund**.

“We are overwhelmed by the support for Memory Care at Allen Brook and the model of care we provide,” said Cathedral Square CEO Kim Fitzgerald. “Clearly people understand how vitally important it is to provide equal access to quality dementia care and services for those without means.”

## When ‘Best Friends’ Become Family at Allen Brook

It’s quite an understatement to say that supporting residents with dementia is a demanding job.

But licensed nurse assistant Bethany LeBlanc can’t get enough of it.

Countless times after finishing her shift this year as an LNA at Memory Care at Allen Brook, Bethany has returned to the community to fill in the voids resulting from a workforce shortage in

food services. She happily preps, cooks, serves and cleans up during and after mealtimes for the 14 residents.

“I absolutely love this place and the residents,” she says. “I’ll do whatever it takes to make sure they get what they need and make sure they are happy.”

Recruited by former Allen Brook manager Ken Bridges when the community first opened in 2017 (he had

previously worked with her), Bethany reluctantly agreed to give it a try. “I quickly discovered that this was the place for me. It’s just so different — it’s such a special place.”

Whether help is needed in the kitchen or elsewhere, Bethany says she’ll keep stepping up. “We’re family here. I’m not going anywhere. I’m in it for the long haul, whatever it takes,” she says. “It’s that important to me.”





Cathedral Square's Cindy Reid and CIDER's Robin Way cut the ribbon at Bayview Crossing, amid funders, residents, and supporters.

## Bayview Crossing Opens in Grand Isle County

Capping more than 17 years of work to bring affordable senior housing to the Champlain Islands, Cathedral Square and CIDER (Champlain Islanders Developing Essential Resources) joined with state and local officials, housing advocates and area residents Nov. 14 to celebrate the opening of Bayview Crossing in South Hero.

The community features 30 mixed-income apartments for older adults and new offices for CIDER, a beloved local nonprofit that provides an array of services to older Island residents.



“We are so excited to welcome our new residents to this beautiful community,” said Kim Fitzgerald, Cathedral Square CEO. “Countless community members pushed for over two decades to create a village center in this location, and they always saw housing as a critical part of it. Thanks to CIDER volunteers, visionaries, and community leaders, utilizing public and private investment, we now have a vibrant community here in South Hero.”

In addition to Bayview Crossing, that vibrant community includes the adjacent Worthen Library, the Champlain Islands Community Health Center, South Hero Fire & Rescue, a preschool, Wally’s Place Bagel & Deli, and a soon-to-open brew pub and restaurant.

A new, 1,400-foot water line funded as part of Cathedral Square’s work on

Bayview Crossing will support future development in the area as well.

Speakers at the event included Vermont Senator Dick Mazza and Commissioner Josh Hanford of the Vermont Department of Housing & Community Development, both of whom noted the role that Bayview Crossing will play in the Islands’ continued prosperity.

“This is a wonderful day, and we’ve been working a long time to get here,” Mazza told the crowd.

Bayview Crossing offers 30 one- and two-bedroom apartments for Vermonters 55 and older at subsidized, tax-credit and market-rate rents. All standard amenities of Cathedral Square housing are provided, including free SASH® (Support and Services at Home) programs and services. The building exceeds Efficiency Vermont’s “High-Performance Multifamily Building” standard, and two EV chargers are installed in the parking lot.

## It’s a Wrap! Celebrating the ‘New’ Whitney Hill

Residents, legislators, funders, policymakers and friends turned out in force the afternoon of June 23 to celebrate the completion of major upgrades at Whitney Hill Homestead, a Cathedral Square housing community off Williston Road near the Williston Village Green.

Whitney Hill Homestead originally was developed in 1992 as an initiative of a former community group called Williston Elder Housing in partnership with Housing Vermont and Cathedral Square. It offers 44 one- and two-bedroom apartments to older adults of all income levels and, since 2011, on-site SASH® (Support and Services at Home) services and programming.



Joining the Whitney Hill festivities were (from left) Gus Seelig of VHCB, Vermont Senator Ginny Lyons, and former Cathedral Square CEO Sarah Carpenter.

Among those attending the celebration were Vermont state senators Ginny Lyons and Thomas Chittenden, and Sarah Carpenter, recently retired executive director of the Vermont Housing Finance Agency, who was CEO of Cathedral Square when Whitney Hill Homestead was first developed.

## Up Next: Kelley’s Field II, Coming to Hinesburg

With broad support from area residents and local leaders, construction is slated to begin in spring 2023 on a second Cathedral Square housing community for older adults in Hinesburg’s village center.

Dubbed Kelley’s Field II, it will add another 24 apartments to the six-acre property where Kelley’s Field is located, the original 24-unit community which Cathedral Square and Evernorth purchased and renovated in 2015.

Cathedral Square’s work on this new community already has reaped a big reward for Hinesburg: a pedestrian-controlled “rapid flashing beacon” crosswalk light will be installed this spring on Rte. 116 near Kelley’s Field, which will improve safety and enhance walkability and access to goods and services.



Residents Judy Smith (L) and Polly Dakin chat outside their homes after the Whitney Hill Homestead “re-opening” celebration.

“Today illustrates the importance of reinvesting in existing affordable housing in addition to building new housing in Vermont,” said Cathedral Square CEO Kim Fitzgerald.

The year-long, \$6.74 million project brought substantial improvements to the 30-year-old community. Not only did residents receive new windows, cabinets, flooring, bathroom upgrades and a renovated community room, all major building systems, including the outdated sprinkler system, were replaced.

Gus Seelig, executive director of the Vermont Housing & Conservation Board, noted that the \$1.13 million VHCB contributed toward the \$6.74 million project was a wise investment, calculating that it amounts to just \$700 per apartment per year to ensure that the 44 apartments will continue providing housing for at least another 30 years.



Rendering of Kelley’s Field II by Duncan Wisniewski Architecture.

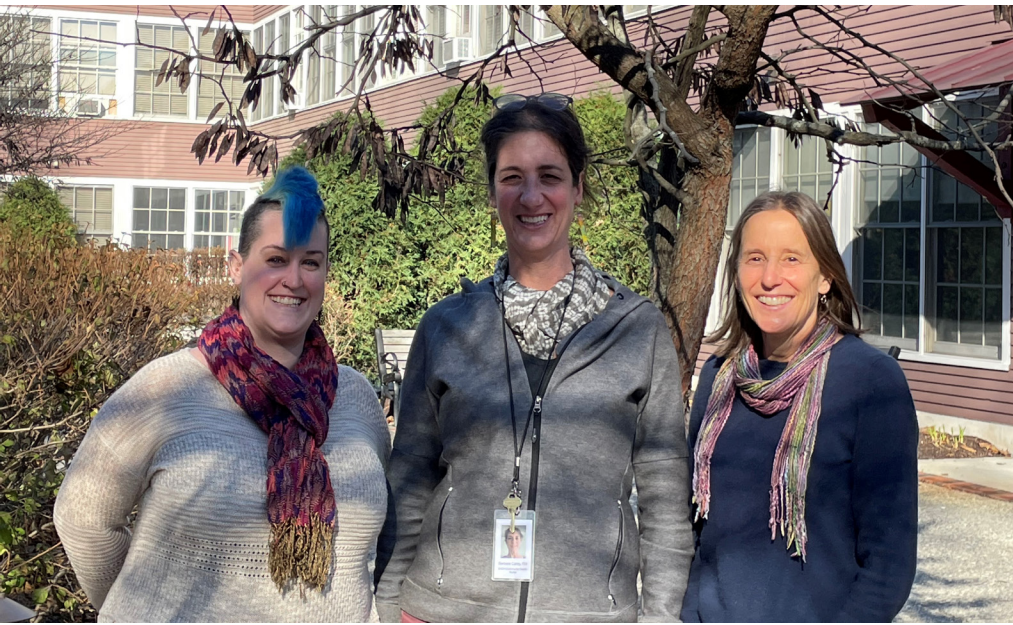
The light was made possible by a 2022 AARP Community Challenge Grant, for which Development staff member Julian Mandigo applied in response to concerns raised by Kelley’s Field residents. Cathedral Square was one of just 260 grantees selected from 3,200 applications submitted nationwide.



‘SASH for All’ Proves a Success in Southern VT

SASH for All (Support and Services at Home for All) is making headway in Brattleboro, where several publicly funded housing communities have been testing the concept. This federally funded pilot initiative is bringing SASH programs and resources to families and individuals living in affordable housing.

While traditional SASH is available to Medicare recipients who are older adults and people with disabilities, SASH for All expands access to low-income residents of all ages and abilities. These individuals are at risk of adverse health outcomes as they struggle to pay their bills on time, live their lives free from hunger, access health care, find and afford quality child care, afterschool, and summer care, continue their education, maintain employment, and more.



The SASH for All team at Windham & Windsor Housing Trust, from left: Katy Peterson, SASH for All coordinator; Barbara Carey, wellness nurse; and Joyce St. Jean, resident services manager.

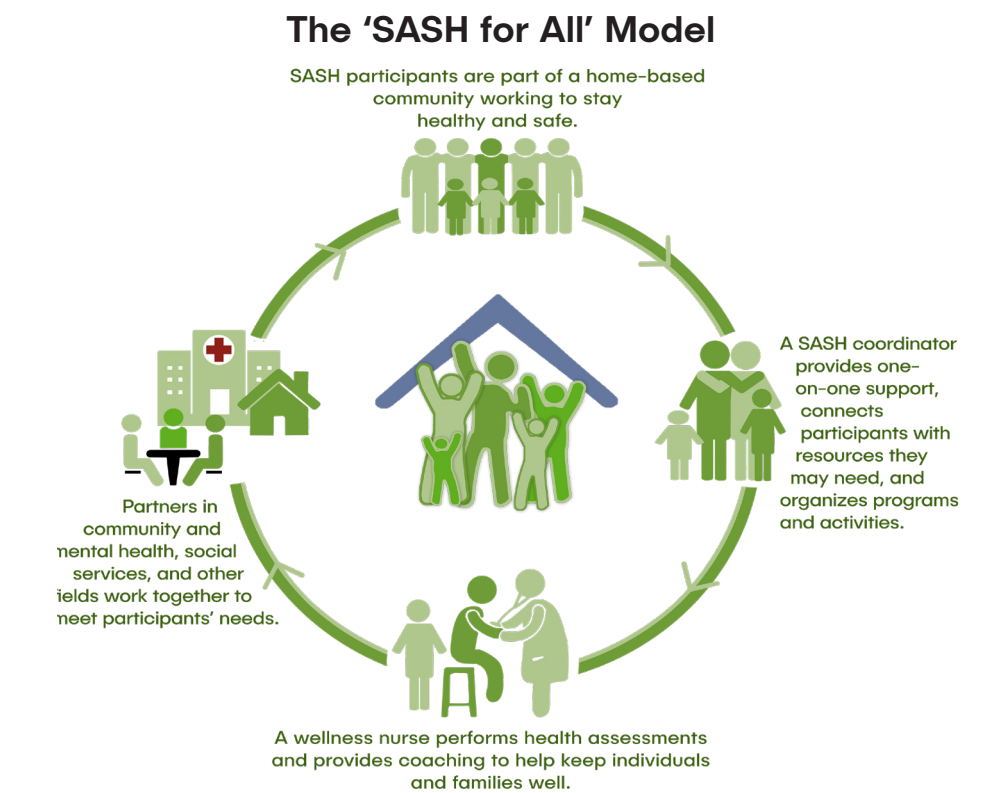
Like all SASH programs, SASH for All is a free and voluntary program. The goal is to provide a broad and flexible spectrum of support and resources within the home to empower participants to achieve goals they have set for themselves.

This year the program has been piloted in 11 affordable-housing communities by Brattleboro Housing Partnerships and the Windham & Windsor Housing Trust, both of which have long operated SASH in their senior housing communities. Evernorth and Downstreet Housing & Community Development provided crucial planning support.

SASH for All staff work with individuals and families to assess their needs, connect them with resources, and help them meet self-defined goals.

Families struggling with financial security, well-being, and social connections receive special focus.

“We know that the SASH model works. If this pilot proves to be as successful as we expect, the potential exists to roll out SASH for All within thousands of affordable, multifamily rental homes across Vermont,” notes SASH director Liz Genge.



A New Partnership with Vermont Blue Advantage®

This fall Cathedral Square formed a partnership with Vermont Blue Advantage®, a licensee of the Blue Cross and Blue Shield Association, to launch a pilot that provides SASH® to up to 300 Vermont Blue Advantage (VBA) Medicare enrollees living in Chittenden County.

“We are thrilled to embark on this partnership with SASH, a Vermont-



grown organization that has received national recognition for its support of older Vermonters,” said Pam Getsie, plan president of Vermont Blue Advantage, in announcing the program.

Traditionally, SASH has served Medicare recipients and others living in affordable housing or nearby, but the VBA pilot is bringing SASH programs and services directly to VBA members in Chittenden County regardless of their housing. A dedicated SASH wellness nurse and care coordinator support each participant’s holistic health and wellness by providing annual health assessments, regular help with coordinating care, education about managing chronic diseases, medication support, and group education and wellness programs.

“What is so compelling about this partnership is that two Vermont-grown organizations are coming together to support all aspects of Vermonters’ health

and wellness, right where they live,” said Getsie of Vermont Blue Advantage. “Innovative support services and care for each other is what we are all about.”

The SASH/VBA initiative is voluntary and completely free to participants.



The SASH/Vermont Blue Advantage team leaders, from left: Cathie Cassano, program manager; Jason Kirchick, wellness nurse; and Caitlin Briggs, SASH coordinator

Five Year Mental Health Pilot to Expand Statewide

A mental health pilot embedded in affordable housing through SASH will be expanded in 2023 thanks to \$1.35 million in funding secured by Sen. Bernie Sanders as part of the 2023 federal budget.



SASH coordinator Susan Abell with resident Maria Charbonneau at Grand Way Commons.

“We are excited to see how the expansion of this program will positively impact the lives of

Vermonters across the state,” said Molly Dugan, director of policy and strategic initiatives at Cathedral Square. “Senator Sanders has been a longtime champion of SASH, and we’re grateful for his continued support of this program.”

Since November 2017, in partnership with the Howard Center, a mental health clinician has been embedded in the SASH teams at two Cathedral Square congregate housing communities. The clinician provides individual and group services based on each resident’s needs, meeting with them in person, via Zoom or by phone as best fits the situation.

The two-site pilot has demonstrated that SASH participants will utilize and seek mental health support if it is readily

available, both in terms of physical and structural access.

The survey also confirmed that learning about mental health and appropriate interventions made housing staff feel they could more effectively manage challenging behaviors and help residents avoid eviction.

A survey of pilot participants found that 95% agreed or strongly agreed that “I received the help I needed.” As one respondent shared, “I think the program is invaluable not only to counsel residents but to provide extremely helpful information about aging, wellness, mental health and how to negotiate some very challenging situations.”



# Going the Distance for ‘Family,’ Day after Day

To Cathedral Square lead maintenance tech Eric Carter, taking on extra work is just in his blood.

“I like to keep busy,” he says matter-of-factly.

Still, it’s hard to imagine how the father of a 16-year-old daughter has managed to juggle the duties of three especially hectic maintenance positions at Cathedral Square for months at a time.

“We never would have survived without Eric’s dedication to the department,” says David Valyou, who oversees maintenance in his role as assistant facilities manager.

Eric brushes off the praise, saying that his supervisors and co-workers have helped *him* survive over the four years he’s been at Cathedral Square.

“No matter what I’ve needed, on or off the job, they’ve been there for me,” he says. “They’re my family. This *place* is my family.”

The appreciation of residents and the camaraderie he shares with his co-workers keep Eric going.

“I’ve never worked at a place where I’ve been treated better,” he says of Cathedral Square.

“How could I ever say no if they need me to do something? I’ll do whatever it takes to keep things running. I just care about the people here that much.”



Above: Eric replaces an EXIT sign light above a door at Grand Way Commons in South Burlington.

Left: Eric with supervisor David Valyou, who Eric says is “just like a father to me.”

## NEW IN 2022: HOME ACCESSIBILITY UPGRADES

With a grant from the U.S. Department of Housing & Urban Development, Cathedral Square is now making essential home-accessibility modifications for older, low-income homeowners in seven rural towns.

As one of just 32 grant recipients awarded nationally, Cathedral Square is receiving \$1 million over three years to manage the program and perform the work. The goal is to increase homeowners’ accessibility and reduce the risk of falls through low-cost, low-barrier, high-impact home modifications such as:

- bathroom and kitchen accessibility features
- improvements to entryways and thresholds
- task and safety lighting
- stair rails and ramps

The grant targets HUD’s definition of rural areas and applies to homeowners in Bolton, Hinesburg, Huntington, Jericho, Richmond, Underhill and Williston. Eligible homeowners must be at least 62 years of age and have a household income below \$53,700 for one person or \$61,400 for two.\*

### HOW IT WORKS

There are three members of the “home mod” staff: a program manager (longtime Cathedral Square staff member Carolyn Gipson), an occupational therapist (OT), and a home modification technician.



Carolyn Gipson

Upon referral and confirmation of eligibility, the OT meets with the homeowner to assess needs and create a plan, then the technician works with the homeowner to implement the recommended modifications. All time and repairs are free to the homeowner.

As of Dec. 31, 2022, 53 participants have been approved and 38 projects have been completed.

“This is a really great program,” says Gipson, citing a project they completed in Underhill as an example. “The man in the house is nearly blind and unsteady on his feet, and his wife also has mobility issues. It was hard for them to enter and exit the house safely,” she explained.

The technician installed railings on both the front entry and the garage steps — but the stairs fell apart when work began so they had to be completely rebuilt. “The couple is thrilled with the help we gave them, and I’m sure we prevented a disaster from happening,” Gipson said.

\*Income limits as of 1/31/2023, subject to change. Contact [gipson@cathedralsquare.org](mailto:gipson@cathedralsquare.org) to learn more.



Before and after photos from Cathedral Square’s Home Modification Program





OUR GENEROUS SUPPORTERS

January 1 – December 31, 2022

VISIONARY LEADERS

Gifts of \$100,000 or more

Hoehl Family Foundation

The McClure Family Foundation

Holly and Bob Miller Charitable Fund

Amy E. Tarrant Foundation

Stephanie Miller Taylor

MISSION CHAMPIONS

Gifts of \$10,000 to \$99,999

Champlain Investment Partners LLC

M&T Charitable Foundation

NFP Property & Casualty Services, Inc.

TD Charitable Foundation

Nancy Wright and Steve Lidle

MISSION STEWARDS

Gifts of \$1,000 to \$9,999

Mohamed Basha

Paula Bass

Cathedral Church of St. Paul

Co-operative Insurance Companies

Celia and Matt Daly

Chris and Theri Davis

Bruce Elliott

Jeanne Finan and Tom Eshelman

The Farmhouse Group

Kim Fitzgerald

Foley Giving Fund

Patricia Fontaine

Thomas Gioia

Google Match Program

Chuck Hoag

Erik Hoekstra

Gerald and Virginia Hornung

Jean Lincoln

Carol Moran-Brown

Jeanne Morrissey

Donna and Remo Pizzagalli

Redstone

Tim Sampson

Kate and Bill Schubart

Sarah Tischler

Kathrynn and Dan Titus

Lillian and Bruce Venner

Alice Winn

Amy Wright and Gil Livingston

KINSHIP COLLABORATORS

Gifts of \$500-\$999

Joseph and Dale Boutin

M. Teena & Richard Flood

Celeste Hahn

Glenn Jarrett and Judy Barber

J D Kantor, Inc.

Craig and Yvonne Jones

Susan Lumbra

Thomas Lumbra, Jr.

Thomas and Margaret Maffit

Judy Walke

Hannah Insurance Agency, Inc., dba Titus Insurance

Kathrynn and Dan Titus

COMMUNITY BUILDERS

Gifts of \$100-\$499

Jill Baker

Lynn Bates

Kevin Baumann

E. Nancy Bell

Sr. Mary Boisselle

Deborah Bouton

Kent Cassella

Rose Cheeseman

Martin and Kathryn Conway

Jayne Coyne

Sarah Curtis

Karin and Gerald Davis

Frank and Ducky Donath

Molly Dugan

Duncan Wisniewski Architecture

Carmel Ewing

Cathy and Joseph Frank

Future Planning Associates, Inc.

Barbara Gay

Greta Getlein

Jennifer Green

John and Laura Green

Francesca Hahn

Natalie Hall

Amy Hamlin

John and Marilyn Hardacre

Paul Hawkins

Jennifer Hunter

Michael Julow

Mary and Patrick Kearney

Elizabeth Law

Roni Lesage

Dan and Nancy Lumbra

Elizabeth Metcalfe

Sharon and Bert Moffatt

Michele Morin

Polly Nichol and William Jordan

Joel Page & Susan Batchelder

Tracy Perrapato

Amy Putnam

Linda Ready

Cindy Reid

Shelley Richardson

Angie and George Robinson

Richard and Lillian Robinson

John Rouleau

Lisa Schamberg and Pat Robins

Michael Simoneau and Geri Reilly

Charles Smith and Amy Mellencamp

Marga and Glenn Sproul

Linda Verba

Monica White

White + Burke Real Estate Investment Advisors, Inc.

CARING COMPANIONS

Gifts up to \$99

Anne Clarke and Kevin Trainor

Catherine Cooke

Chol Dhoor

Judy Garrow

Elizabeth Genge

Shaun Gilpin

Diane and Shauna Hauser

Helen Head

Darlene Lander

Christopher and Jennifer Leopold

Joanne Lewis

Tom and Susan Little

Sally Lord

Sue McCormack

Robin and Thomas McCormick

Bud and Genevieve Ockert

Brian Pine and Liz Curry

Steve Rivard

Richard and Lillian Robinson



Gisele Nelson (left), a resident of Whitney Hill Homestead since it opened 30 years ago, smiles with Cathedral Square CEO Kim Fitzgerald after receiving a bouquet in honor of her tenure at the community.

Camilla Rockwell

Tracy Schneider

Anya Schwartz

Seven Days

Willard Smith

Nancy Snyder

Mary Martin

Don and Linda Martin

Alice Rouleau

John Rouleau

Sharon Stevens

Sarah Curtis

TRIBUTE GIFTS

IN HONOR OF...

Carole Barrett

Kevin Baumann

Martin and Kathy Conway

Jayne Coyne

Sally Lord

Susan Lumbra

Dan and Nancy Lumbra

Thomas Lumbra, Jr.

Thomas and Margaret Maffit

Chris Davis

Sarah Gentry Tischler

Holly Miller and Passang Dolma

Nancy Wright and Steve Lidle

Polly Nichol

Kirby Dunn

Darlene Ryan

Joseph and Dale Boutin

IN MEMORY OF...

Connie Hebert

Angie and George Robinson

Forrest Lander

Darlene Lander

CAMPAIGN FOR MEMORY CARE AT ALLEN BROOK DONORS

Mohamed Basha

Kevin Baumann

Deborah Bouton

Kent Cassella

Martin and Kathryn Conway

Jayne Coyne

Chris Davis

Chol Dhoor

Kim Fitzgerald

M. Teena and Richard Flood

Patricia Fontaine

Elizabeth Genge

Greta Getlein

Shaun Gilpin

Jennifer Green

Google Match Program

Celeste Hahn

Francesca Hahn

Craig and Yvonne Jones

Hoehl Family Foundation

Erik Hoekstra

Joanne Lewis



With COVID restrictions eased, residents and staff gathered this summer for fun-filled get-together in the community room at Grand Way Commons in South Burlington.



Nancy Wright and Steve Lidle  
Jean Lincoln  
Sally Lord  
Thomas Lumbra, Jr.  
Dan and Nancy Lumbra  
Susan Lumbra  
M&T Charitable Foundation  
Thomas and Margaret Maffit  
McClure Family Foundation  
Holly and Bob Miller Charitable Fund  
Carol Moran-Brown  
Michele Morin  
NFP Property & Casualty Services, Inc.  
Polly Nichol  
Bud and Genevieve Ockert  
Tracy Perrapato  
Amy Putnam  
Linda Ready

**GRANTS FOR PROPERTY DEVELOPMENT & SPECIAL INITIATIVES**  
AARP Community Challenge Grant  
Burlington Electric Department  
Burlington Housing Trust Fund  
Burlington Office of Community & Economic Development  
Champlain Valley OEO Weatherization Program  
CIDER Capital Campaign Donors  
Community Development Block Grant  
Efficiency Vermont  
Federal Home Loan Bank of Boston Affordable Housing Program  
HOME Investment Partnership  
Housing Ministries of New England  
Mascoma Bank

**FUNDERS OF SASH®**  
Paula Bass  
Burlington Housing Trust Fund  
Cathedral Square  
Centers for Disease Control & Prevention  
Centers for Medicare & Medicaid Services  
Champlain Investment Partners LLC  
Community of Vermont Elders & Vermont Senior Medicare Patrol  
Dartmouth Centers for Health and Aging  
Department of Vermont Health Access  
Green Mountain Transit Agency  
Elizabeth Law  
Northern New England Geriatric Education Center  
OneCare Vermont  
Steve Rivard  
U.S. Department of Health & Human Services, Administration for Children & Families  
UVM Center on Aging  
Vermont Agency of Human Resources  
Vermont Community Foundation  
Vermont Department of Disabilities, Aging & Independent Living  
Vermont Department of Health  
Vermont Housing & Conservation Board  
Vermont Program for Quality in Health Care

**IN-KIND DONORS**

Arcana Gardens  
Bill Bissonette  
Bolton Valley Resort  
Deborah Bouton  
Burlington Paint and Sip  
Cabot Creamery  
Chef’s Corner  
Danform Shoes  
Molly Dugan  
Elizabeth Genge  
Kim Fitzgerald  
Healthy Living Market  
Jay Peak  
Keurig Green Mountain  
Cathy Kukla  
Leonardo’s Pizza  
Maplehurst Florist  
Panera Bread  
Pet Food Warehouse  
Pizzeria Verita  
Cindy Reid  
Shelburne Farms  
Skida  
Spare Time Entertainment  
Vermont Everyone Eats

Cindy Reid  
Camilla Rockwell  
Tim Sampson  
Nancy Snyder  
Amy E. Tarrant Foundation  
Stephanie Miller Taylor  
Kathrynn and Dan Titus  
David White  
Monica White

**PROPERTY DEVELOPMENT PARTNER AGENCIES**  
Burlington Housing Authority  
Vermont State Housing Authority

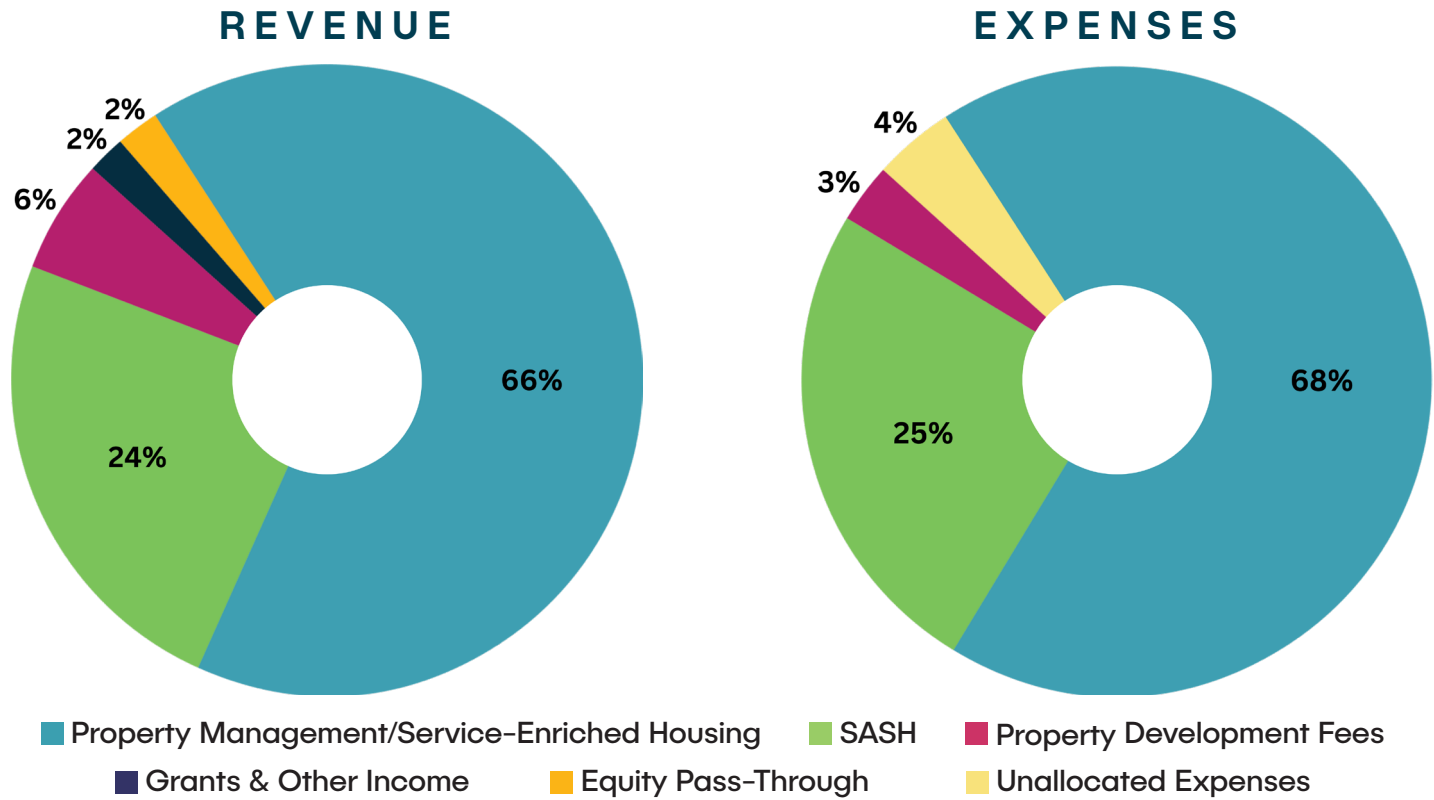
National Housing Trust Fund  
People’s United Bank / M&T Bank  
State of Vermont Electric Vehicle Supply Equipment Grant  
Town of Hinesburg  
TD Charitable Foundation  
U.S. Dept. of Housing & Urban Development  
Vermont Center for Independent Living  
Vermont Community Development Program  
Vermont Department of Labor  
Vermont Electric Coop  
Vermont Gas Systems  
Vermont Housing & Conservation Board  
Vermont Housing Finance Agency  
The Harry & Jeanette Weinberg Foundation



After the lifting of COVID restrictions, several staff gather for a photo to celebrate being together again in person.

**FINANCIAL STATEMENT**

**FY 2022**  
10/1/2021-9/30/2022



**CONSOLIDATED ASSETS & LIABILITIES**

**ASSETS**

Cash and Cash Equivalents.....	\$6,540,823
Reserves & Restricted Accounts .....	\$2,502,193
Land, Buildings & Furniture (net) .....	\$12,280,846
Equity Contributions.....	\$4,912,607
Accounts Receivable .....	\$1,640,773
Notes Receivable.....	\$107,804
Prepays & Other Assets .....	\$85,124
Resident Security & Escrow Deposits .....	\$132,032
<b>Total Assets.....</b>	<b>\$28,202,202</b>

**LIABILITIES & NET ASSETS**

Notes Payable.....	\$10,165,898
Accrued Interest Payable.....	\$19,236
Other Liabilities.....	\$4,486,479
Resident Security & Escrow Deposits .....	\$145,922
Accounts Payable.....	\$254,648
<b>Total Liabilities.....</b>	<b>\$15,072,183</b>
<b>Total Net Assets .....</b>	<b>\$13,130,019</b>
<b>Total Liabilities &amp; Net Assets .....</b>	<b>\$28,202,202</b>

**CONSOLIDATED REVENUE & EXPENSES**

**REVENUE**

Property Management/Service Enriched Housing .....	\$10,047,429
SASH (Support and Services at Home).....	\$3,629,109
Development Fees .....	\$879,625
Grants & Other Income.....	\$341,825
Equity Pass Through .....	\$349,401
<b>Total Revenues.....</b>	<b>\$15,247,389</b>

**EXPENSES**

Property Management/Service Enriched Housing .....	\$9,487,572
SASH (Support and Services at Home).....	\$3,457,907
Development Fees .....	\$425,351
Unallocated Expenses .....	\$539,971
<b>Total Expenses.....</b>	<b>\$13,910,801</b>

**CORPORATE & PROPERTY ASSETS MANAGED**

Corporate .....	\$10,934,329
Owned & Affiliated .....	\$18,459,443
Partnerships .....	\$98,671,990
Management Agreement.....	\$1,694,239
<b>Total Managed Assets .....</b>	<b>\$129,760,001</b>

It is important that our records are accurate. If we have made an error, please accept our apologies and let us know. Email [info@cathedralsquare.org](mailto:info@cathedralsquare.org) or call 802-863-2224.



## *Dishing It Out in Our Assisted Living Communities*

**W**eek in and week out, dozens of Cathedral Square staff volunteer in the kitchens of our two assisted-living communities to fill in for what otherwise would be a paralyzing workforce shortage.

They chop salad veggies, heat and serve meals prepared in advance by our food-service manager, clean up afterwards and chat with residents along the way.

Shifts last about three hours, and the time passes quickly. “It’s so rewarding and is such a tangible way to connect with our mission,” said Director of Policy and Strategic Initiatives Molly Dugan after a recent dinner shift.

Cathedral Square board members get in on the action too. Ex-officio board member Greta Getlein, dean and rector of the Cathedral Church of St. Paul, is a frequent volunteer. She and her wife, Wanda Strickland, have lost count of how many times they’ve pitched in to help with meals.

“The week we first learned of the kitchen staff shortage, we covered four or five shifts — and we did that the following weeks as well,” says Greta. “So we really learned our way around the kitchens at both locations.”



Wanda and Greta say that filling in is fun and rewarding and “a way to give a little something back.” And because St. Paul’s Church started Cathedral Square, “it just feels like it’s the right thing to do it — to keep supporting what we started. And what’s better than feeding people?”

◀ Instagram post by former Director of Communications & Outreach Deb Bouton after she and Molly Dugan volunteered for a dinner shift at Cathedral Square Assisted Living.



Wanda Strickland (left) and Greta Getlein take a break during dinner preparations at Memory Care at Allen Brook in Williston.