

ALLARD SQUARE

A new CATHEDRAL SQUARE Community in South Burlington!

Allard Square, Cathedral Square's newest community, is under construction and scheduled to open in October 2018. Located at 146 Market Street in South Burlington, Allard Square will offer 39 affordable one- and two-bedroom apartments for households ages 55 and older.



Monthly rent will include all utilities (heat, air conditioning, electricity) and laundry. All Cathedral Square communities also include 24-hour maintenance and SASH[®] (Support and Services at Home) services provided by an onsite SASH[®] Care Coordinator and Wellness Nurse.

Building amenities include underground parking, a lounge, a community room and kitchen, laundry, an exercise room and an activity room. The property will offer a covered porch and raised garden beds. Kitchens and bathrooms are accessible. Each apartment will have a secured storage unit. Allard Square is a pet-friendly and smoke-free property.

Allard Square is conveniently located in South Burlington's new City Center, close to shopping, services, and GMTA transportation.

Allard Square Apartments

Number of Apartments	Type of Apartment	Number of Bedrooms	Maximum Income - 1 Person Household	Maximum Income - 2 Person Household	Monthly Rent
25	Apartment with Rental Assistance	1	\$32,150	\$36,750	30% of resident's income
4	Tax-Credit Apartment*	1	\$38,580	\$44,100	\$850
2	Market Rate Apartment (80% AMI**)	1	\$50,350	\$57,550	\$1,200
2	Market Rate Apartment (80-120% AMI**)	1	\$77,160	\$88,200	\$1,200
6	Market Rate Apartment (80-120% AMI**)	2	\$77,160	\$88,200	\$1,350

* Section 8 vouchers accepted in Tax-Credit Apartments.

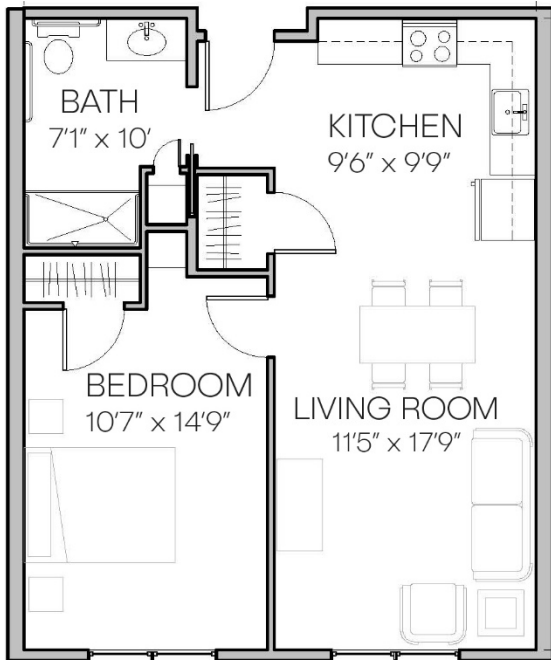
** AMI = Area Median Income

Note: Maximum incomes listed are 2018 HUD incomes effective 4/1/18 and may change in the future.

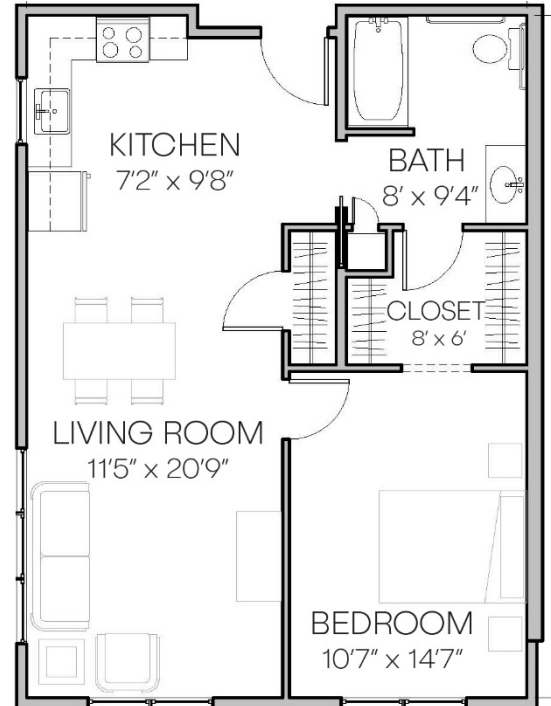
OVER →

ALLARD SQUARE

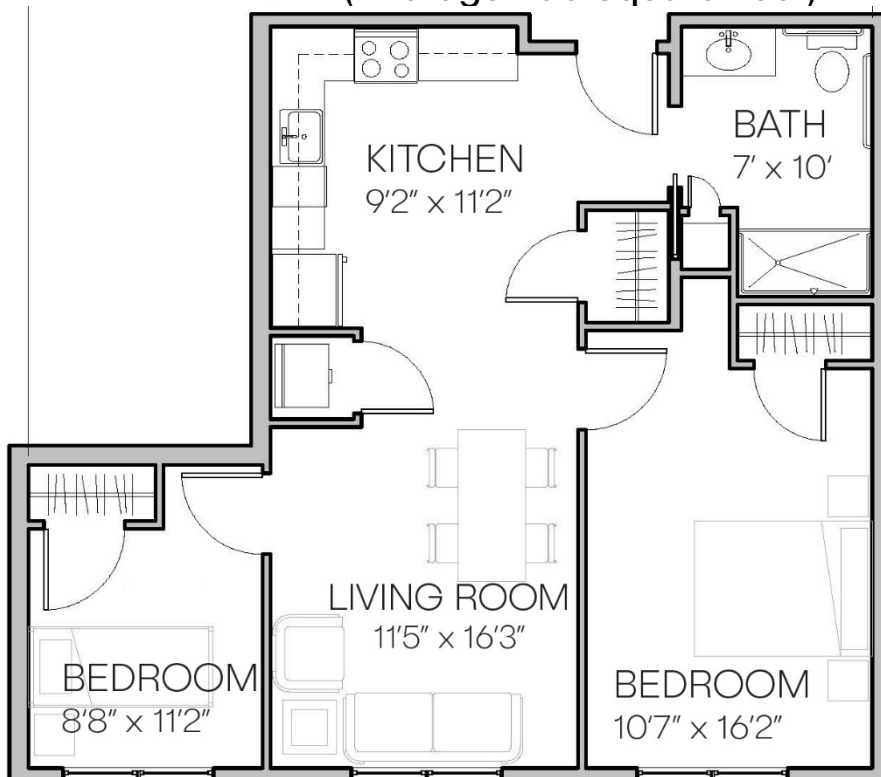
Typical One-Bedroom
(Average 600 Square Feet)



Typical One-Bedroom
(Average 625 Square Feet)



Typical Two-Bedroom
(Average 700 Square Feet)



Questions?
Call Cathedral Square
802-863-2224
(tty/ttd: 800-253-0191)